



GPR62 Polyclonal Antibody

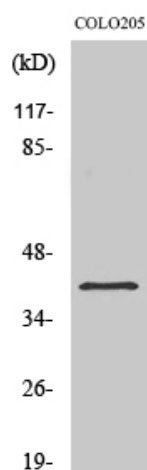
Catalog No	YP-Ab-13345
Isotype	IgG
Reactivity	Human;Rat;Mouse;
Applications	WB;ELISA
Gene Name	GPR62
Protein Name	Probable G-protein coupled receptor 62
Immunogen	The antiserum was produced against synthesized peptide derived from human GPR62. AA range:181-230
Specificity	GPR62 Polyclonal Antibody detects endogenous levels of GPR62 protein.
Formulation	Liquid in PBS containing 50% glycerol, 0.5% BSA and 0.02% sodium azide.
Source	Polyclonal, Rabbit,IgG
Purification	The antibody was affinity-purified from rabbit antiserum by affinity-chromatography using epitope-specific immunogen.
Dilution	Western Blot: 1/500 - 1/2000. ELISA: 1/20000. Not yet tested in other applications.
Concentration	1 mg/ml
Purity	≥90%
Storage Stability	-20°C/1 year
Synonyms	GPR62; Probable G-protein coupled receptor 62; G-protein coupled receptor GPCR8; hGPCR8; G-protein coupled receptor KPG_005
Observed Band	38kD
Cell Pathway	Cell membrane ; Multi-pass membrane protein . Endosome membrane ; Multi-pass membrane protein . Colocalizes with ARRB2 in the endosome (PubMed:28827538). .
Tissue Specificity	Expressed in brain; detected in the basal forebrain, frontal cortex, caudate, putamen, thalamus and hippocampus.
Function	function:Orphan receptor.,similarity:Belongs to the G-protein coupled receptor 1 family.,tissue specificity:Expressed in brain; detected in the basal forebrain, frontal cortex, caudate, putamen, thalamus and hippocampus.,
Background	function:Orphan receptor.,similarity:Belongs to the G-protein coupled receptor 1 family.,tissue specificity:Expressed in brain; detected in the basal forebrain, frontal cortex, caudate, putamen, thalamus and hippocampus.,
matters needing attention	Avoid repeated freezing and thawing!



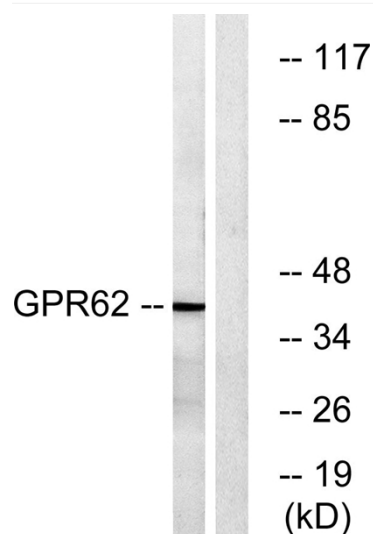
Usage suggestions

This product can be used in immunological reaction related experiments. For more information, please consult technical personnel.

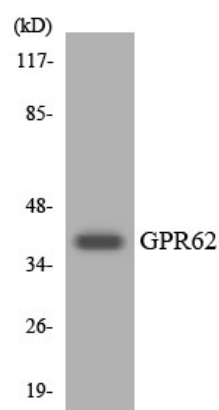
Products Images



Western Blot analysis of various cells using GPR62 Polyclonal Antibody



Western blot analysis of lysates from COLO cells, using GPR62 Antibody. The lane on the right is blocked with the synthesized peptide.



Western blot analysis of the lysates from Jurkat cells using GPR62 antibody.